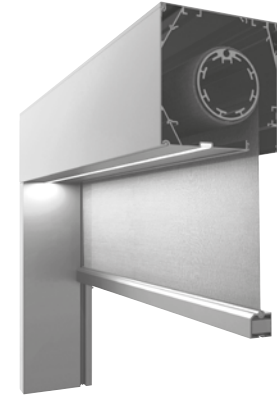


RS Smart 150  
RS Smart 150 with LED



The RS Smart 150 with LED is suitable for use on facades and existing canopies. The LED lighting provides a warm appearance and reduces see-through at night, increasing privacy. The guide rails are thick to ensure smooth product movement from the box to the uprights of the canopy.

**RS Smart 150 with LED**

**RS Smart 150 square with LED**

**RS Smart 150 square**

**end slats**

**Maxi**

**Midi**

**guide rails**

**STG**

**STG-Click**

**offset profile**

	Maximum	width (cm)	height (cm)
<b>RS Smart 150</b>	700	600	

Only motor operation is possible in RS Smart 85



**Standard casing colours RS Smart**

Colour closest to RAL\*

RAL 9001 Cream white	RAL 9010 White	RAL 9016 Traffic White
CO-natural (anodised)	RAL 7016 Anthracite gray	RAL 7039 Quartz gray
RAL 8019 Brown		

Structural Finish\*

STR 9506 White aluminium	STR 9507 Gray aluminium	
STR 7539 Quartz gray	STR 7516 Anthracite gray	tiger 29/80081 Iron Glimmer (Structural Finish)
RAL 9505 Black	RAL 7521 Grey-black	

	RAL 9001 Cream white	RAL 9010 White	RAL 9016 Traffic White	CO-natural (anodised)	RAL 7016 Anthracite gray	RAL 7039 Quartz gray	RAL 8019 Brown	STR 9506 White aluminium	STR 9507 Gray aluminium	STR 7539 Quartz gray	STR 7516 Anthracite gray	Tiger 29/80081 Iron Glimmer (Structural Finish)	RAL 9505 Black	RAL 7521 Grey-black
RS Smart 85 45°	•	•	•	•	•	•	•	•	•	•	•	•	•	•
RS Smart 85 square	•	•	•	•	•	•	•	•	•	•	•	•	•	•
RS Smart 85 half-round	•	•	•	•	•	•	•	•	•	•	•	•	•	•
RS Smart 100 45°	•	•	•	•	•	•	•	•	•	•	•	•	•	•
RS Smart 100 half-round	•	•	•	•	•	•	•	•	•	•	•	•	•	•
RS Smart 100 square	•	•	•	•	•	•	•	•	•	•	•	•	•	•
RS Smart 100 arc	•	•	•	•	•	•	•	•	•	•	•	•	•	•
RS Smart 130 45°	•	•	•	•	•	•	•	•	•	•	•	•	•	•
RS Smart 130 half-round	•	•	•	•	•	•	•	•	•	•	•	•	•	•
RS Smart 130 square	•	•	•	•	•	•	•	•	•	•	•	•	•	•
RS Smart 130 arc	•	•	•	•	•	•	•	•	•	•	•	•	•	•
RS Smart 130 square with revision	•	•	•	•	•	•	•	•	•	•	•	•	•	•
RS Smart 150 square with LED	•	•	•	•	•	•	•	•	•	•	•	•	•	•
RS Smart 150 square	•	•	•	•	•	•	•	•	•	•	•	•	•	•

\* Small colour differences may occur during the coating process. Slight colour variations are possible.

**RS Smart 130 and RS Smart 150 - PVC film options**

**Option 1\***

Film in the middle.  
The minimum fabric size below, above and on sides is 11.5 cm.

**Option 2\***

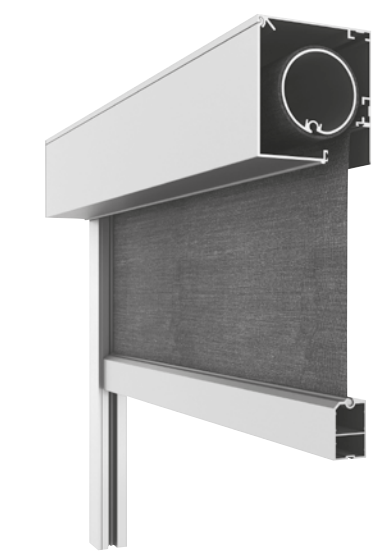
Film over the entire surface

\*Maximum film dimensions 4 x 3 m



Your supplier of sun protection systems

RS Smart



Due to the innovative design that allows you to hide the bottom strip in the box, RS Smart takes less light than other similar products. A box with side guides integrated with a fabric made of fiberglass and PVC, which is durable and resistant to weather conditions such as gusty wind, hail or rain. Additionally, thanks to the properties of the used fabrics, they guarantee optical comfort inside the building - on the one hand, they do not give the effect of darkening and on the other hand they suppress the penetration of intense sunlight.

Smart 85 is a compact model that takes up the least space in the window. RS Smart 100 is a universal model, while RS Smart 130 can be used for very large areas - up to 6.0 mx 5.0 m. Another advantage of this model is the possibility of access to the box from below.





### RS Smart 85

**RS Smart 85 45°**

**RS Smart 85 square**

**RS Smart 85 half-round**

**end slat**

**guide rails**

**STG-S\***

**STG**

**STG-Click**

	Maximum	width (cm)	height (cm)	area (m²)
<b>RS Smart 85</b>		300	200	6,0

Only motor operation is possible in RS Smart 85

### RS Smart 130

**RS Smart 130 45°**

**RS Smart 130 half-round**

**RS Smart 130 square**

**RS Smart 130 arc**

**RS Smart 130 square**  
revision hatch at the bottom side of the box

**end slat**

**guide rails**

**STG**

**STG-Click**

**STG-S\***

**offset profile**

	Maximum	tube	width (cm)	height (cm)	area (m²)
<b>RS Smart 130</b>	Ø78	400	600	24,0	
<b>RS Smart 130</b>	Ø85	540	500	27,0	
<b>RS Smart 130</b>	Ø100	600	280	16,8	

Only motor operation is possible in RS Smart 85

### RS Smart 100

**RS Smart 100 45°**

**RS Smart 100 half-round**

**RS Smart 100 square**

**RS Smart 100 arc**

**end slat**

**guide rails**

**STG**

**STG-Click**

**STG-S\***

**offset profile**

	Maximum	width (cm)	height (cm)	area (m²)
<b>RS Smart 100</b>		400	300	12,0

Only motor operation is possible in RS Smart 85

### RS Smart 130 XL

#### Mounting on the pergola (screws)

**RS Smart 130 XL square**

1 screw every 50 cm

**end slat**

**guide rail**

**STG**

	width (cm)	maximum height (cm)
<b>RS Smart 130 XL</b>	600 - 700	280

Only motor operation is possible in RS Smart 130 XL.

